



MR16 PLUS 6W.

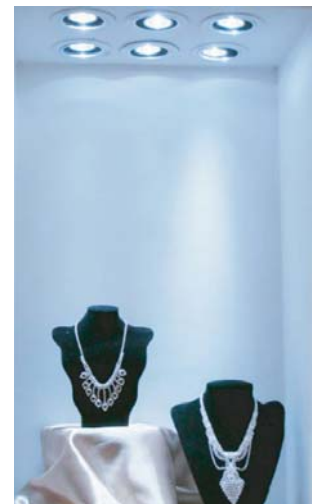
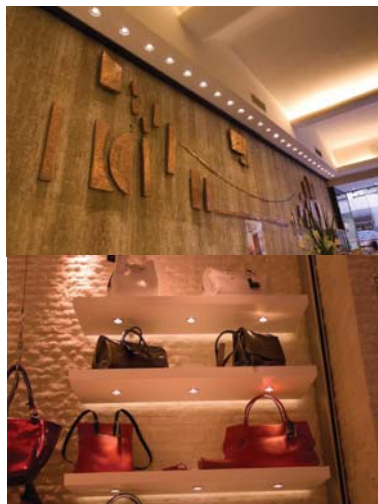
- This product shall be used with 12V AC/DC output
It's not allowed to connect with 220V AC voltage directly.
- Ensure the transformer is with enough output power.
- The applied ambient temperature must be lower than 40°C
- Not suitable for poorly ventilated lighting fixtures.
- Not suitable for dimmers.

FEATURES

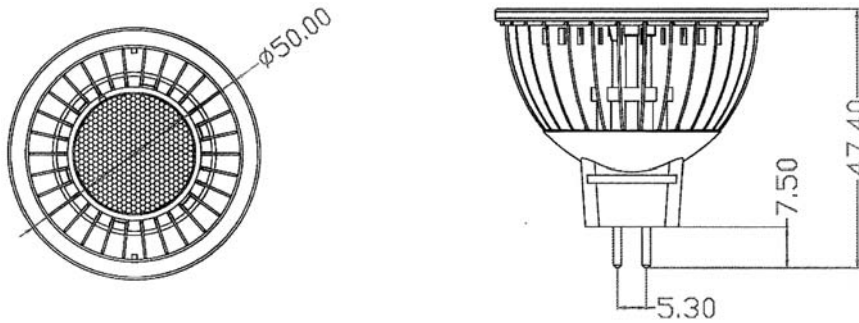
- RoHs compliant
- Degrees of ingrees Protection : IP65
- Excellent thermal performance
- No UV Light

APPLICATION

- Commercial lighting
- Architectural lighting
- Landscape lighting
- Interior Commercial lighting



DIMENSION



Unit : mm . Tolerance : 2.5 mm.

SPECIFICATION

Parameter	Specification	Units
Power Consumption	6	W
Input Voltage	12	Vdc
Field Angles	24°	Degree
Color Temperature	3000 / 6000	°K
Life Time	20,000	hr.
Weight	26 ± 3	g.
Base	GU5.3	--

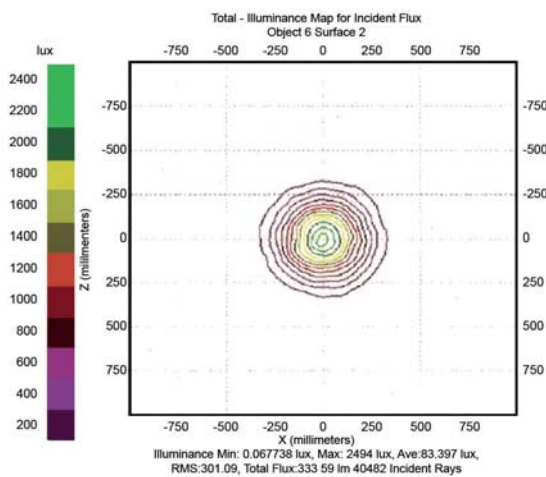


ILLUMINANCE AND FIELD ANGLE

The tables present the illuminance level with respect to different color temperature.

Product Code	Power Consumption	Field Angle	Flux(lm)[Typ.]	Lux@ 1m.[Typ.]	Color	CCT
30MS029006EC024W	6 W	24°	330	1,500	Cool White	6,000 K
30MS029006EW024W		24°	250	1,200	Warm White	3,000 K

LIGHT PATTERN



Beam Angle 24° X, Warm White(2700~3000K)
Intensity:

